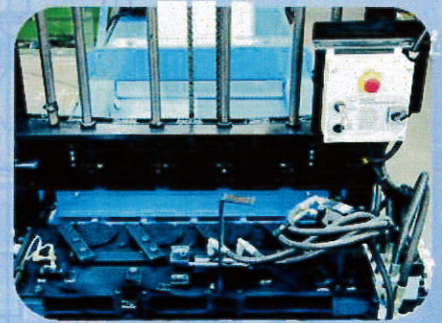
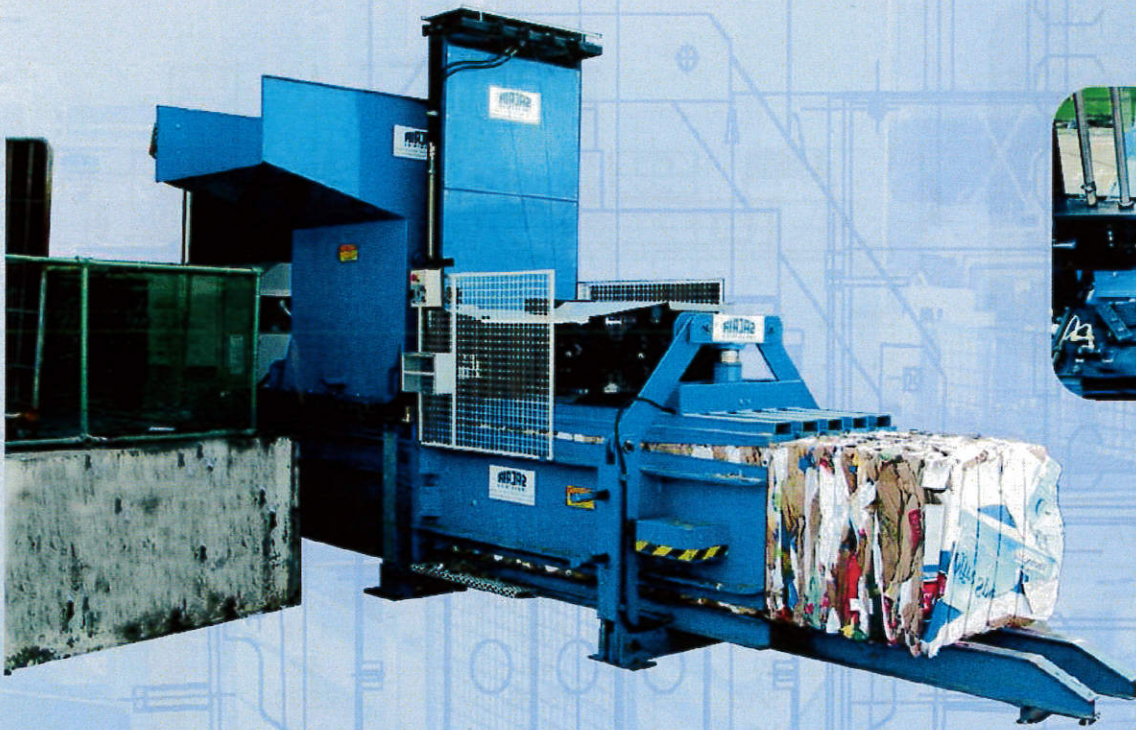
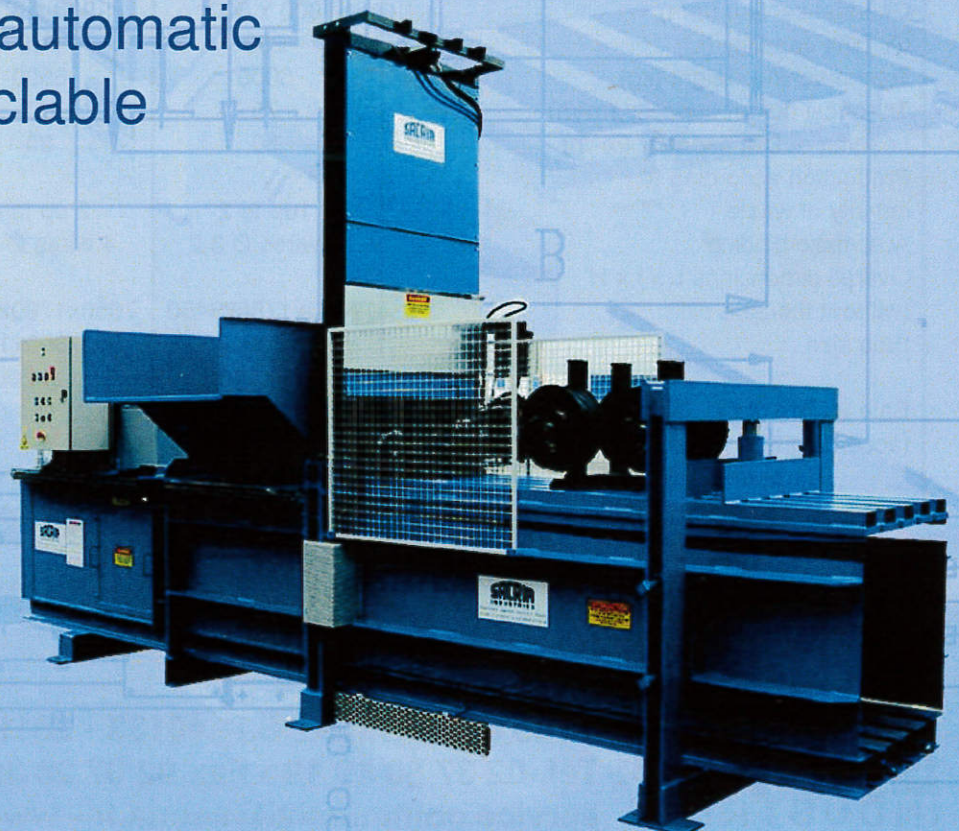


Horizontal Balers with automatic tying

SAPHIR 300 - 340 - 500



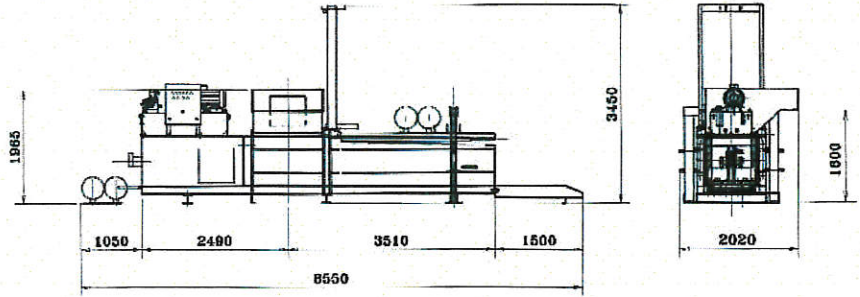
A full range of automatic balers for recyclable wastes



SACRIA
INDUSTRIES



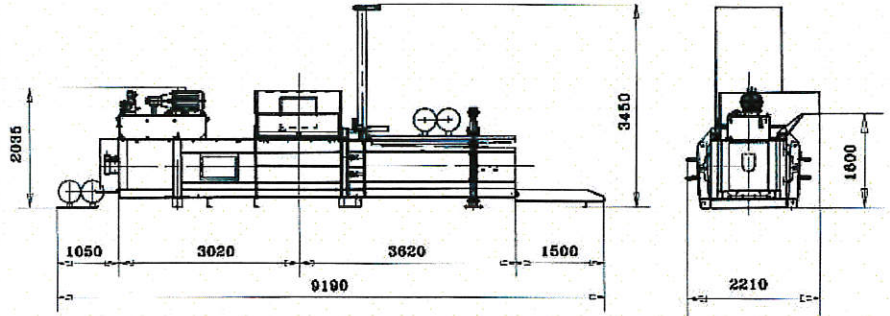
SAPHIR 340 with a conveyor belt



SAPHIR 340 AT



SAPHIR 340 with a binlift



SAPHIR 500 AT

TECHNICAL DATA	SAPHIR 300	SAPHIR 340	SAPHIR 500
Feed opening/Aperture (mm)	1200 x 900	1200 x 900	1400 x 1000
Loading capacity (m ³)	0,85	0,85	1,12
Press Force (tons)	30	40	50
Motor (KW/Hp)	7,5/10	15/20	22/30
Specific pressure (kg/cm ²)	4,1	5,6	6,25
Number of cycle/minute	1,5	3	3
Channel section (mm)	900 x 800	900 x 800	1000 x 800
Oil tank capacity (L)	250	400	500
Total machine weight (kg)	6000	6500	9000
Theoretical output capacity (m ³ /h)	75	150	250
Loading output capacity (m ³ /h)	50	90	150
Production according to density of waste	1 up to 2	2 up to 4	4,5
Automatic binding	4 wires Ø 3,2	4 wires Ø 3,2	4 wires Ø 3,2
Overall dimensions L x l x H (without the bale exit)	7050x1780x3450	7050x1780x3450	7700x1850x3450
Bale size	900x800x800 up to 1400	900x800x1000 up to 2000	1000x800x Adjustable length
Bale weight (kg) (according type of waste and length)			
Carboard	300	300 - 350	400 - 600

SACRIA reserves the right to alter its models and their characteristics fittings and accessories without prior notice.



4 rue de La Taye - B.P. 40133 - 28113 LUCÉ Cedex
 Tél. 02 37 88 19 19 - Fax 02 37 28 36 66
 service.commercial@sacria.fr - www.sacria.fr

